



SWARAJ STRUC-CON PVT. LTD.

**Corp. Off.:**

111/112, Arenja Corner, Plot No. 71,  
Sector 17, Vashi, Navi Mumbai - 400 703

Tel.: 4142 2222/2788 4488/1188, 2765 7766 / 0303 (Fax)  
E-mail: info@swaraj.co.in

For Sales: 93200 40520 / 93203 02030

www.swaraj.co.in

**ARCHITECT**

Dimension

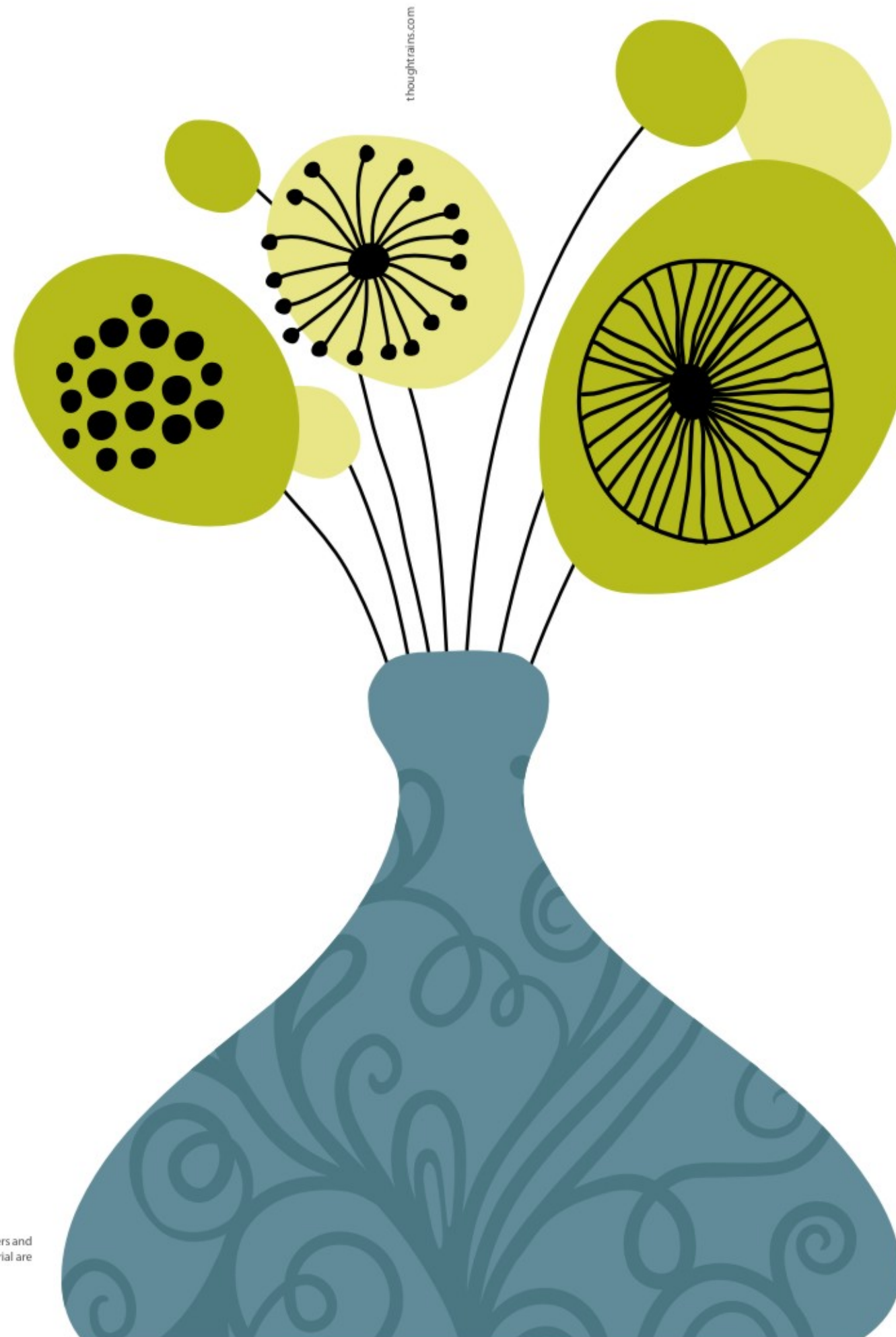
**RCC CONSTRUCTION**

Structural Concept

**LEGAL ADVISOR**

Himanshu Bheda & Co.

All the specification, design, facilities, dimensions, etc. are subject to the approval of the respective authorities & developers and would be changed if necessary. The discretion remains with the developers. The pictures used in this promotional material are entirely the impression of an artist's imagination and must not be misconstrued as real examples



SWARAJ  
**DAFFODILS**  
AIROLI

YOUR AVALON FOR LIFE





## **SWARAJ** **Vision for tomorrow**

Having a tremendous aspiration to excel, Swaraj Group works with the best of partners, architects, consultants and thus delivers the best to its clients. With an international outlook, cosmopolitan attitude and quality conscious approach Swaraj Group is now constructing landmarks through its way to accomplishment. Having successfully undertaken ventures on land spanning across 2 million sq. ft. Swaraj Group still has 1 million sq. ft of land for its ongoing ventures. Offering a unique combination of prime location, aesthetic appeal, functional design and excellence of construction with an affordable price is a trademark that solely belongs to Swaraj. It has also been conferred with ISO 9001:2004 & ISO 14001:2008 for the same.

- 1 Swaraj Kingston - Ulwe
- 2 Swaraj Imperial - Kharghar
- 3 Sai Raj - Airoli
- 4 Queens Bay - Kopar Khairane
- 5 Swaraj Sankheshwar - Roadpali
- 6 Swaraj Kalash - Chembur
- 7 Swaraj Daffodils - Airoli

- Completed projects - 50 nos.
- Under construction - 10 nos.
- Upcoming - Residential Township at Panvel & many others





## SWARAJ DAFFODILS

### **Your Avalon for life**

No matter how social a man is, at the end of the day, he needs to retire to his own cave, that's what Swaraj Daffodils is – your own cave, your own private space, your Avalon for life.

At Swaraj Daffodils, despite enjoying sheer luxurious isolation and heavenly feeling of being by yourself, you are still in the heart of the city. Located at Airoli, your abode is not far away from all the integral civic facilities.

- 16 storied tower with dual level shopping block
- Exclusive 2 BHK flats with sun deck
- Varied sizes shops and showrooms
- Recreational facilities at podium level

So if comfort and seclusion are what you're looking for, come to Swaraj Daffodils. Here's where you can enjoy privacy and peace. Here's where you can be yourself.





## Living life the intelligent way

Lifestyle is living a life intertwined with comfort, luxury, peace and at the same time keeping up with the demands of the new millennium. The need of the hour is not just living within the four walls of a house but living in a space that provides you with facilities that de-stress you and refresh your mind, body and soul.

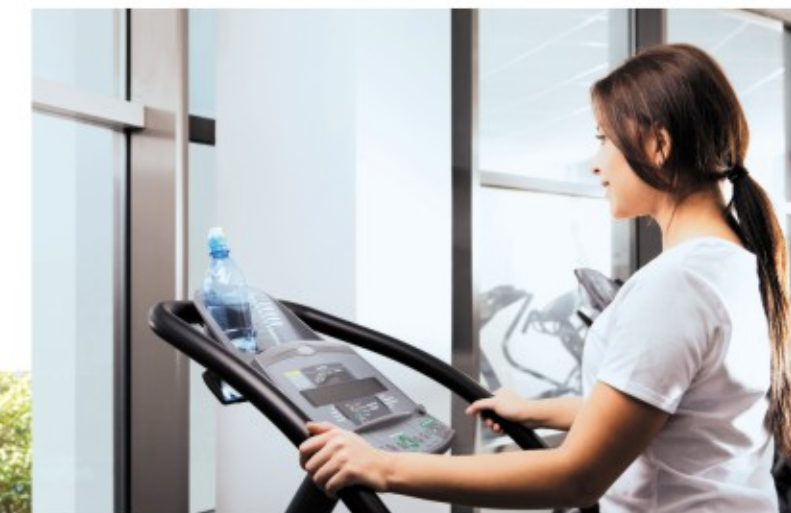
At Swaraj Daffodils, we provide you with lifestyle facilities and security on one hand and exclusive privacy of one's personal space, on the other. We are thinking beyond and bringing in the conveniences of tomorrow, today. For us luxury and lifestyle are synonymous with Intelligent Living.





## Adding Value to life

- Spacious and attractive entrance lobby
- Branded high-speed elevators
- Swimming pool with kids' pool and changing rooms
- Well-equipped A/C gymnasium
- Steam bath
- Party hall with lawn
- Designer landscape garden
- Jogging track
- Children's play area with equipment
- Indoor games
- Temple
- Ample car parking space







## The earthly paradise

A home is a foundation for the family's shared sense of purpose while providing a springboard for each member to pursue his or her own goals.

After many hours of looking for food, a bird returns to its nest, taking supreme comfort in a place that is warm and safe, far removed from the dangers and distractions of the world outside.

Home and family are our nest, the centre of our life, the hub from which all our daily experiences extend. Both as children and adults, our home and family are where we feel most comfortable in the world.







## Little things that make living worthwhile

### Structure

- An elegant elevation of G+16 stories
- Earthquake-resistant RCC structure
- Cross-ventilation
- High quality construction

### Flooring

- Vitrified flooring in all rooms

### Kitchen

- Kitchen with granite platform
- Stainless steel sink
- Service platform
- Full-height designer tilling
- Exhaust Fan
- Branded water purifier

### Bathroom

- Contemporary bathroom designs with branded sanitary fittings
- Provision of space for washing machine
- Full-height designer tilling.
- Exhaust fan
- Branded geyser

### Doors & windows

- Designer doors with decorative fittings
- Anodized aluminium French windows with one way glass
- Safety grills for all windows and balconies
- Mosquito net protection in all windows
- Sundeck with SS railing and toughened glass

### Paints & electrical

- Gypsum walls in all rooms with acrylic emulsion paint inside flat
- Branded concealed copper polycap wiring with ample electrical points
- Modular switches
- Provisions of points for AC, Washing Machine, Geyser, Water filter, Exhaust fan, Internet, etc.

### Security

- High-tech security with video door phone
- Intercom facility for better security and connectivity

### Backup system

- Generator Power back up for elevators and common areas
- Fire fighting systems with latest equipment



Images displayed are actual site-photographs of previous completed projects



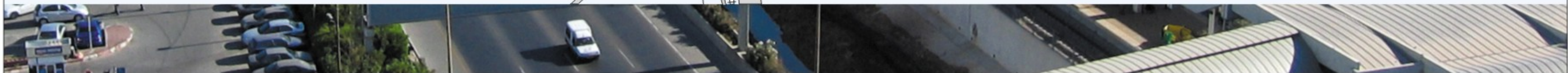


## Airoli- Inevitably the best futuristic destination

Airoli could easily be called a location that is truly blessed. It is actually an axis around which all the comforts and conveniences needed for day to day living revolve. Airoli is intricately planned and divided into sectors which are developing at a very fast pace.

- Thane and Mulund within 2 km radius(10 min )
- Thane -Belapur Express Road at 1 km distance
- IT Hub, Patni , DAKC in close proximity
- Well-connected by road and rail
- Easy access by road to International and domestic airport
- All civic facilities like hospitals, schools, colleges, banks, ATM's, temples, malls at stone throw distance
- Rabale and Airoli Railway Station at 10 min walking distance.

Airoli is thus soon to emerge as one of the most crucial suburb which has also made it the future address of International Diplomatic Enclave (IDE) which would include facilities like international school, auditoriums, seminar facilities, exhibition spaces, health club, convenience shopping and restaurants.





GROUND FLOOR PLAN



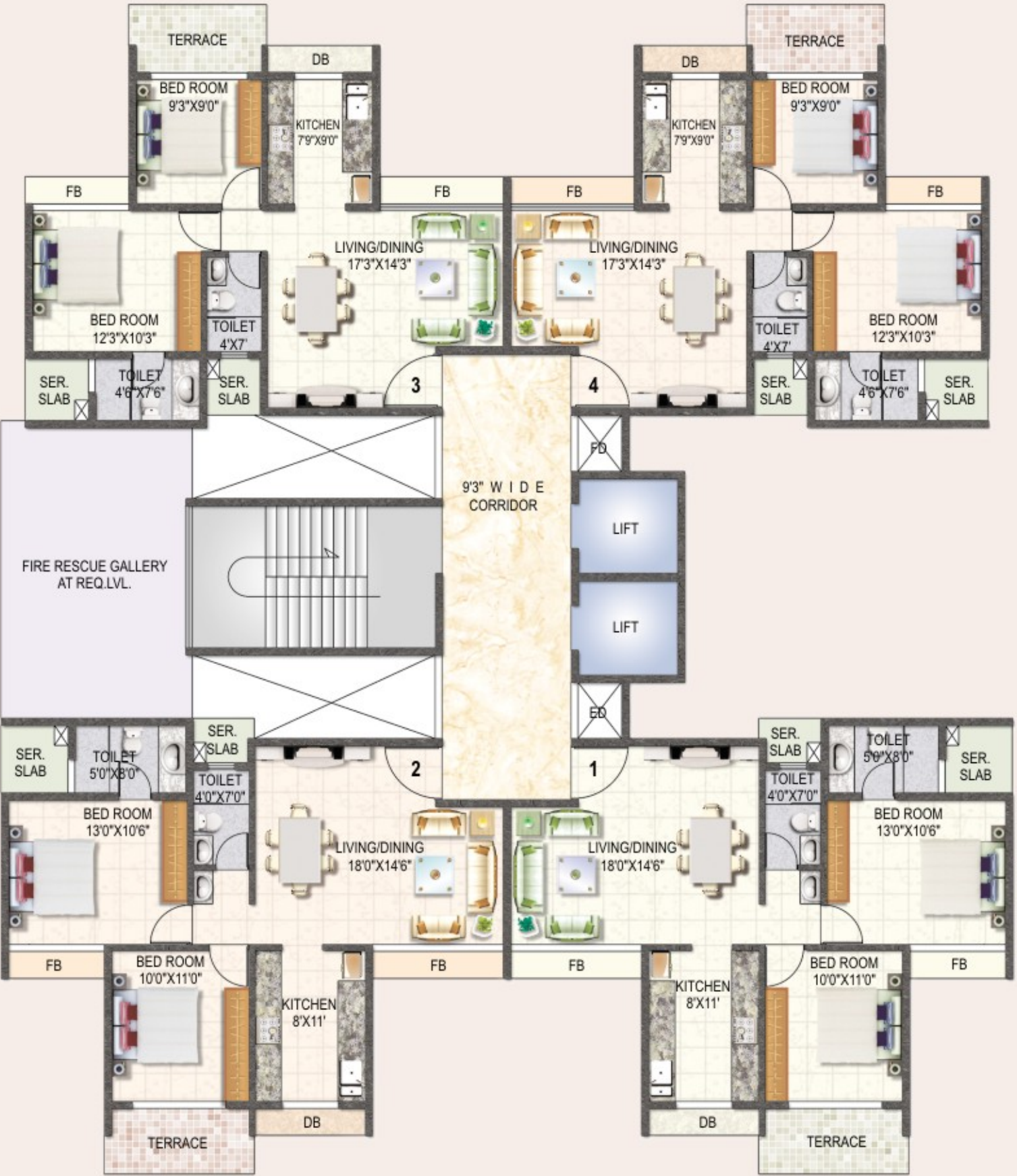
PODIUM (1st FLOOR) PLAN



- Amenities**
- 1 Landscape garden
  - 2 Swimming pool & Kids pool
  - 3 Indoor Games
  - 4 Party Hall
  - 5 Children's play area
  - 6 Ample parking space
  - 7 Jogging Track
  - 8 Fully-equipped A/C Gymnasium with Steam Bath



TYPICAL EVEN FLOOR PLAN  
2, 4, 6, 8, 10, 12, 14 & 16TH FLOOR



TYPICAL ODD FLOOR PLAN  
3, 5, 7, 9, 11, 13 & 15TH FLOOR

